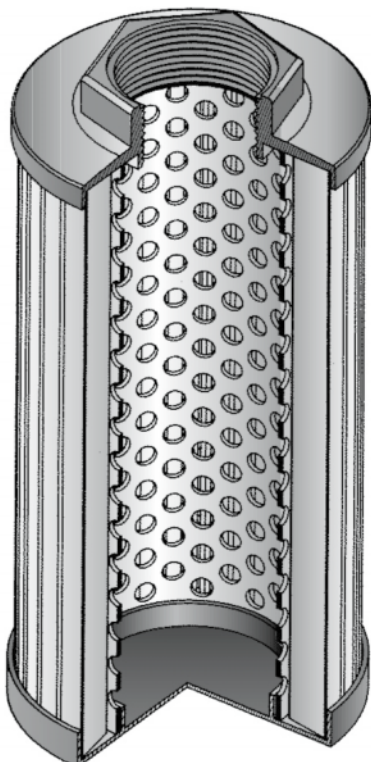


PUMP CARE

Suction Filters

SA & SB



MATERIALS

Connector:
Polyamide
(Aluminium for ESA & ESB 51 - 52)

End cap:
Polyamide
(Zinc plated steel for ESA & ESB 51 - 52)

Bypass valve:
(SA) Polyamide

Magnetic core:
(SB) Syntherized magnetic material

PRESSURE (ISO 10771-1:2002)

Collapse, differential:
100 kPa (1 bar)

BYPASS VALVE

Setting:
30 kPa (0,3 bar) +/-10%

WORKING TEMPERATURE

From -25° to +110° C

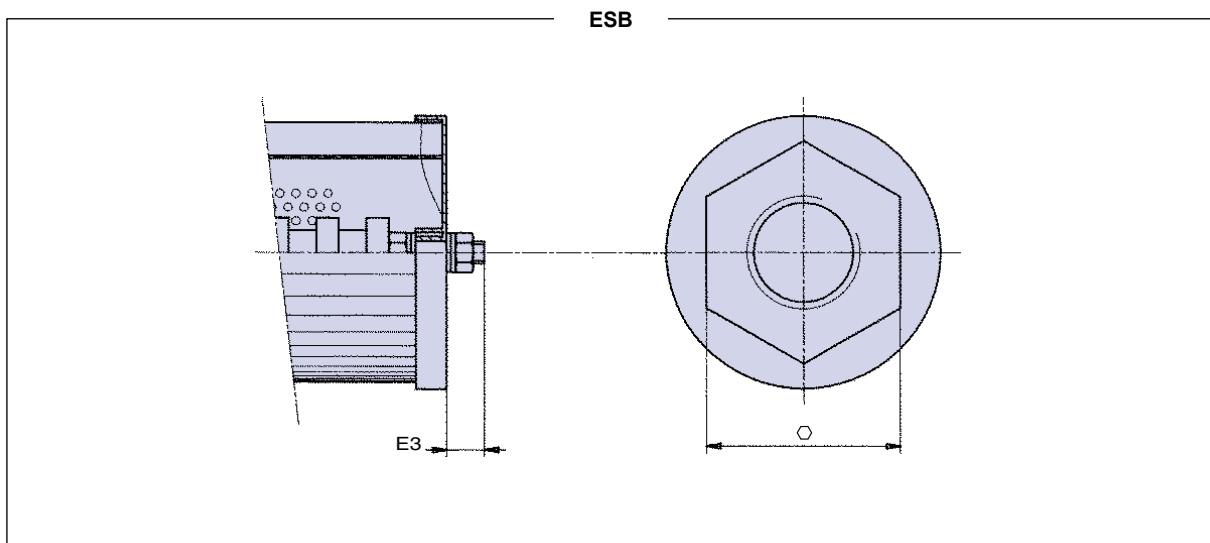
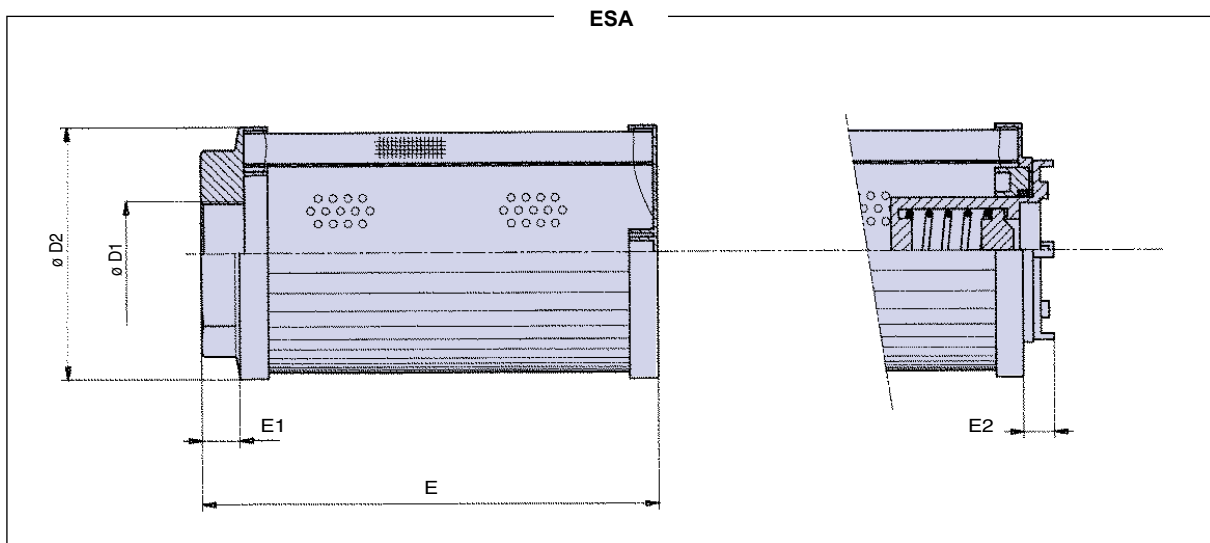
COMPATIBILITY (ISO 2943:1999)

Full with fluids: HH-HL-HM-HR-HV-HG
(according to ISO 6743/4)
For fluids different than the above mentioned,
please contact our Sales Department.



INSTALLATION DRAWING

- in Fluid Energy Management



DIMENSIONS AND WEIGHTS

FILTER ELEMENT

	D1	D2	E	E1	E2	E3	⬡	kg - SA	kg - SB
ESA & ESB11	3/8" - 1/2"	52	73	12	13	9	30	0,05	0,10
ESA & ESB21	1/2" - 3/4"	70	92	13	11	12	42	0,25	0,30
ESA & ESB22	3/4" - 1"	70	137	13	11	13	42	0,25	0,30
ESA & ESB30	1 1/4" - 1 1/2"	99	135	15	12	12	70	0,30	0,35
ESA & ESB31	1 1/4" - 1 1/2"	99	178	15	12	12	70	0,40	0,45
ESA & ESB32	1 1/4" - 1 1/2" - 2"	99	218	15	12	14	70	0,50	0,60
ESA & ESB40	1 1/2" - 2"	130	160	15	15	14	70	0,50	0,60
ESA & ESB41	1 1/2" - 2"	130	201	15	15	14	70	0,70	0,80
ESA & ESB42	2" - 2 1/2" - 3"	130	253	15	25	14	101	1,00	1,20
ESA & ESB43	3"	130	330	15	25	14	101	1,30	1,50
ESA & ESB51	3 1/2"	180	390	35	-	4	140	2,80	3,00
ESA & ESB52	4"	180	440	35	-	4	140	3,00	3,20



PRESSURE DROP CURVES (Δp)

The Pressure Drop (Δp) must be lower than 3 kPa (0,03 bar).

