

TRANS CARE

Filters for hydrostatic transmissions

TA - TB



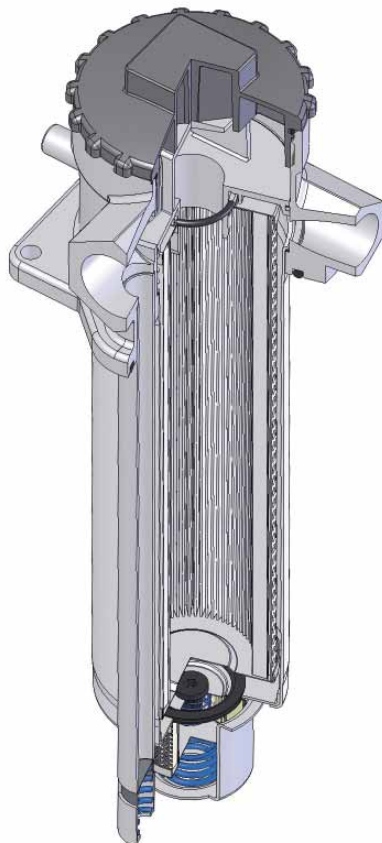
CLOGGING INDICATOR

A visual or electrical indicator is available as an option and allows to monitor the element condition. The port for the indicator is a standard feature.



FILTER ELEMENT

The filter element is manufactured with filter medias selected in the UFI laboratory and mechanically supported to maintain the highest performance even at high differential pressures.



QUICK MAINTENANCE

Thanks to a threaded cap no tool is needed when replacing the element.

MATERIALS

Head:
Aluminium alloy

Cover:
Polyamide TA-TB23
Aluminium alloy TA-TB31-32-33

Bowl:
Steel

Seals:
NBR Nitrile

Indicator housing:
Brass

PRESSURE (ISO 10771-1:2002)

Max working: 1 MPa (10 bar)

Test: 1,5 MPa (15 bar)

Bursting: 3 MPa (30 bar)

Collapse, differential
for the filter element: 1 MPa (10 bar)

BYPASS VALVE

Setting: 250 kPa (2,5 bar) +/-10%

WORKING TEMPERATURE

From -25° to +110° C

WEIGHT

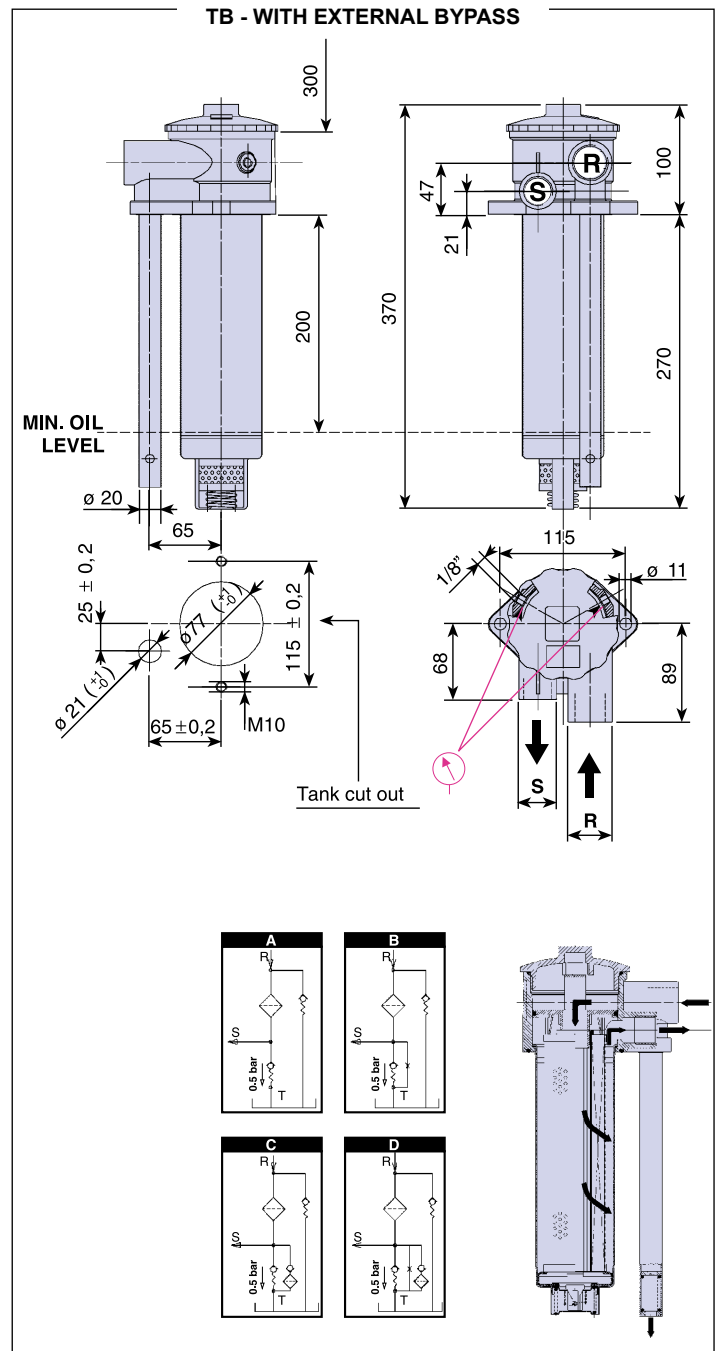
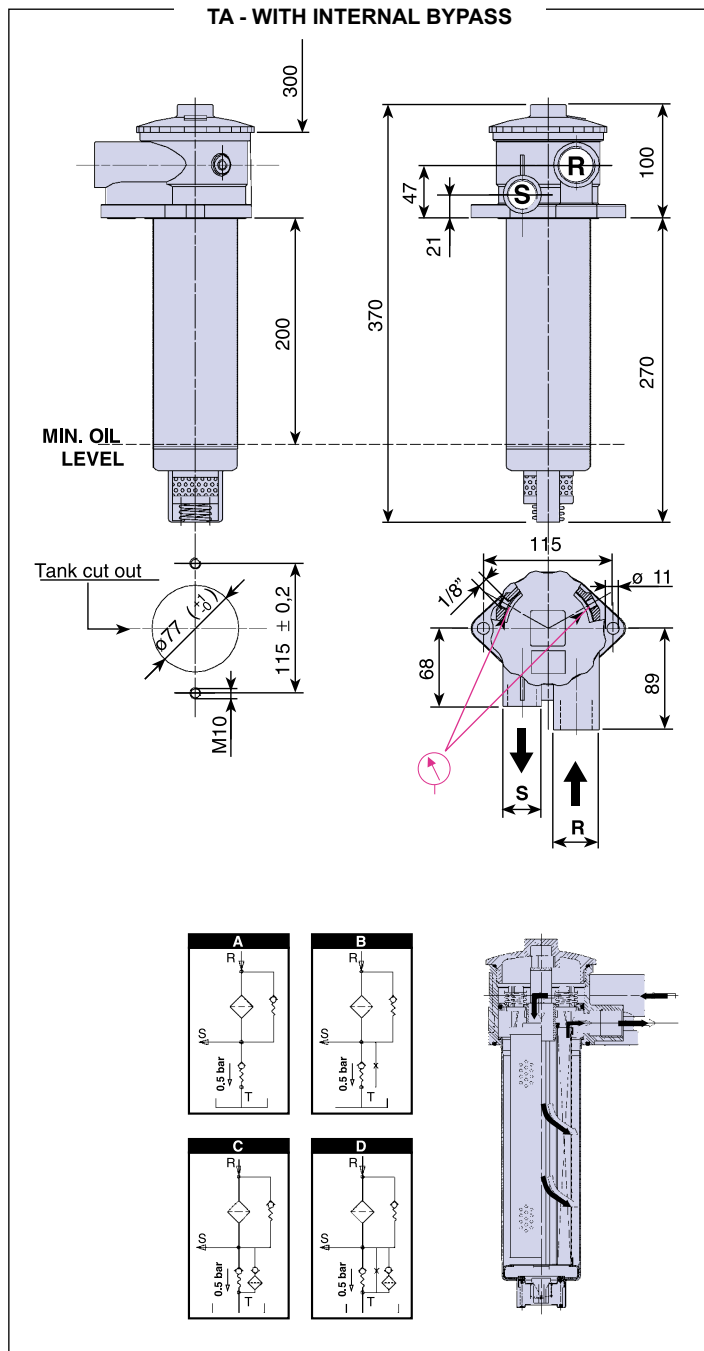
kg. 1,5 TA-TB23
kg. 3,5 TA-TB31
kg. 4,0 TA-TB32
kg. 4,4 TA-TB33

COMPATIBILITY (ISO 2943:1999)

Full with fluids: HH-HL-HM-HR-HV-HG
(according to ISO 6743/4)
For fluids different than the above mentioned,
please contact our Sales Department.

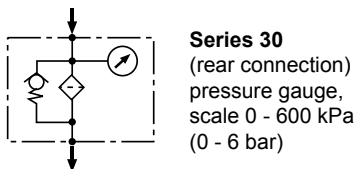
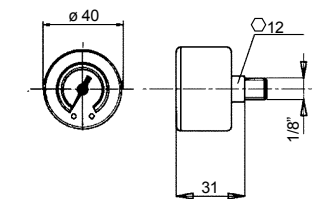


INSTALLATION DRAWINGS TA-TB 23

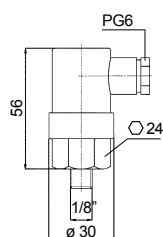


CLOGGING INDICATORS

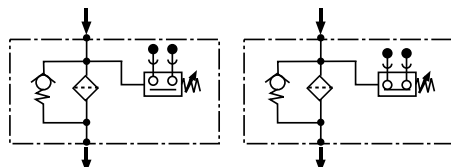
SERIES 30



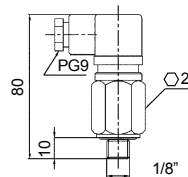
SERIES 86 & 87



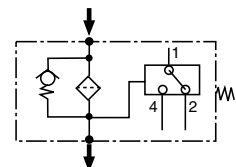
Series 86 (N.O. contacts)
& series 87 (N.C. contacts):
pressure switch - max voltage
220 Vca 50-60 Hz
protection IP65
max current 0,5A resistive,
0,25A inductive
switching power 100VA
setting 200 kPa (2,0 bar).



SERIES P6

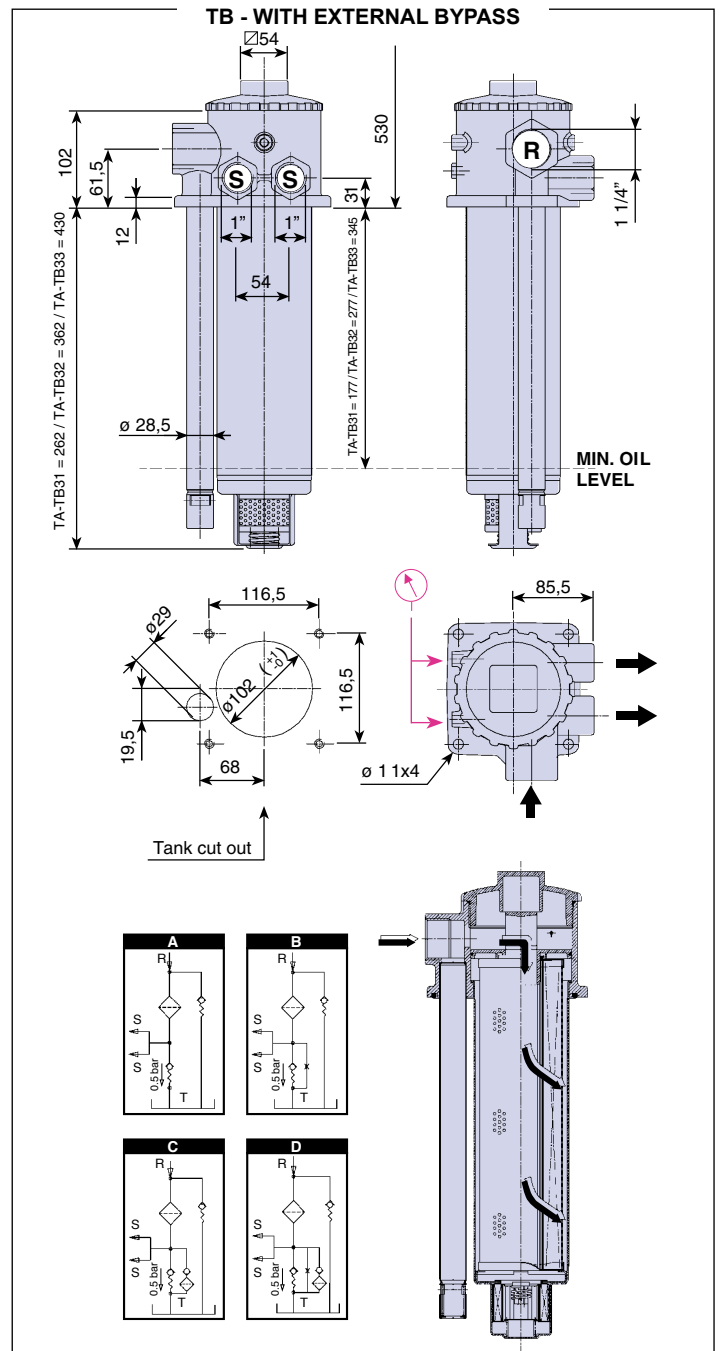
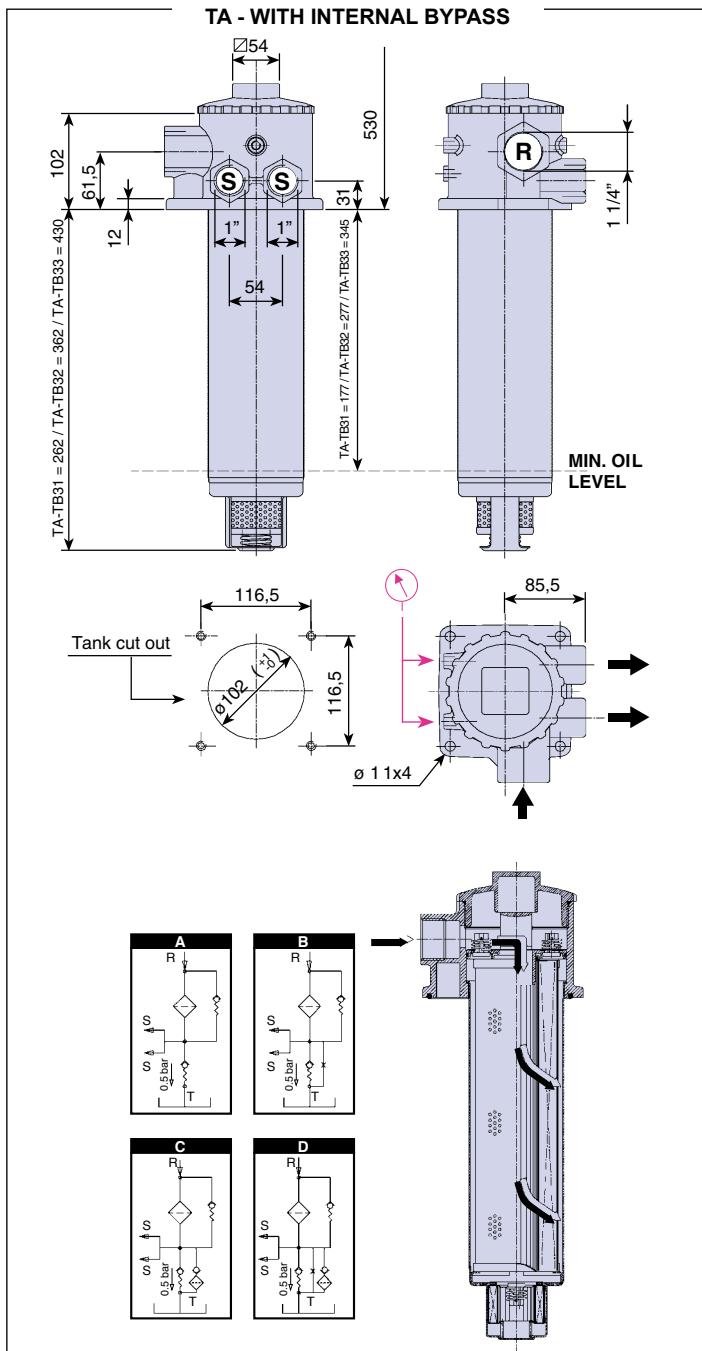


Series P6:
SPDT,
pressure switch
max voltage 250V - 50Hz
max current 6A resistive,
1A inductive
protection IP65
setting 200 kPa (2 bar)





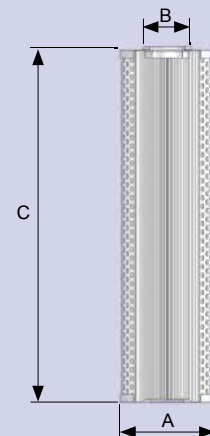
INSTALLATION DRAWINGS TA-TB 31-32-33



DIMENSIONS

FILTER ELEMENT

	A	B	C	kg	Area (cm ²)	
					Media F+	Media C+
ETA23	63,5	28	230	0,40	1.900	2.200
ETA31	90	40	232	0,55	2.800	3.200
ETA32	90	40	333	0,77	4.100	4.400
ETA33	90	40	400	0,85	4.900	5.400

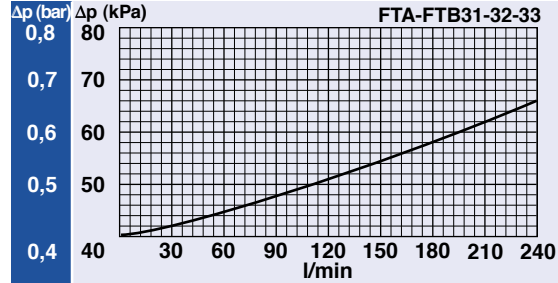
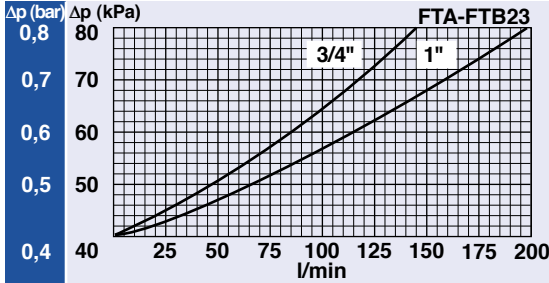




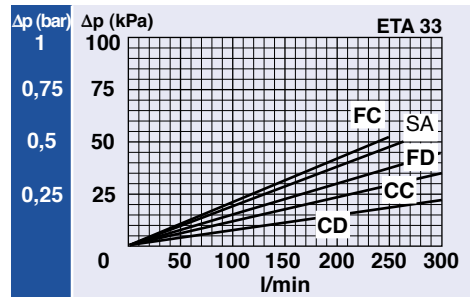
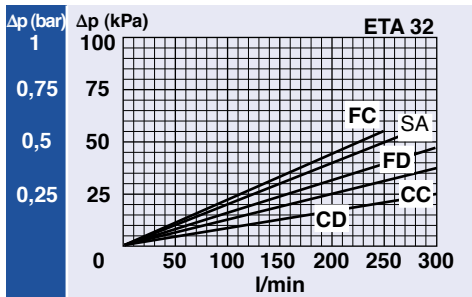
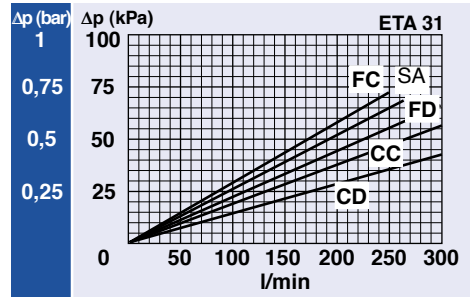
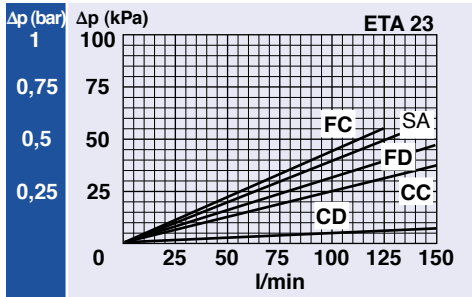
PRESSURE DROP CURVES (Δp)

- in Fluid Energy Management

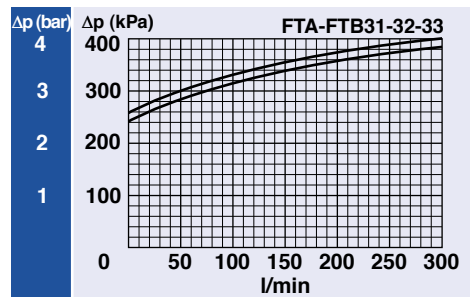
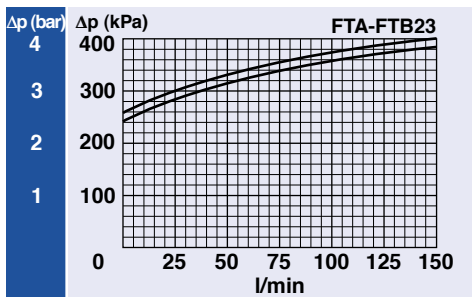
FILTER HOUSING PRESSURE DROP



CLEAN FILTER ELEMENT PRESSURE DROP



BYPASS VALVE PRESSURE DROP



N.B. All the curves have been obtained with mineral oil having a kinematic viscosity 30 cSt and specific gravity 0,9 kg/dm³; for fluids with different features, please consider the factors described in the first part of this catalogue. All the curves are obtained from test done at the UFI HYDRAULIC DIVISION Laboratory, according to the specification ISO 3968:2005. In case of discrepancy, please check the contamination level, viscosity and features of the fluid in use.

